

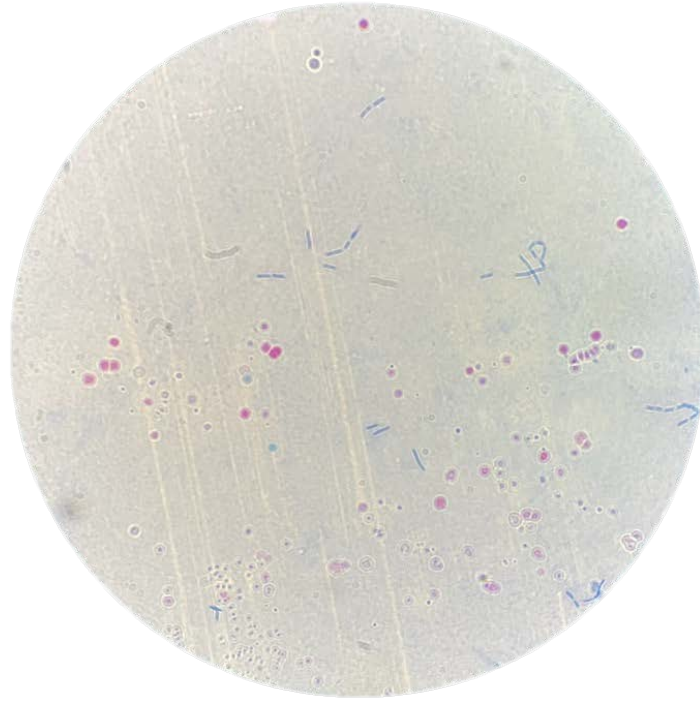
*Figure 1: P. larvae cultures on a Columbia blood agar plate (Bollwein Markus)*



*Figure 2: A Columbia blood oblique agar that is positive due to the brownish discoloration (Bollwein Markus)*



*Figure 3: A Columbia blood oblique agar that has not been inoculated with any cultures, therefore no discoloration (Bollwein Markus)*

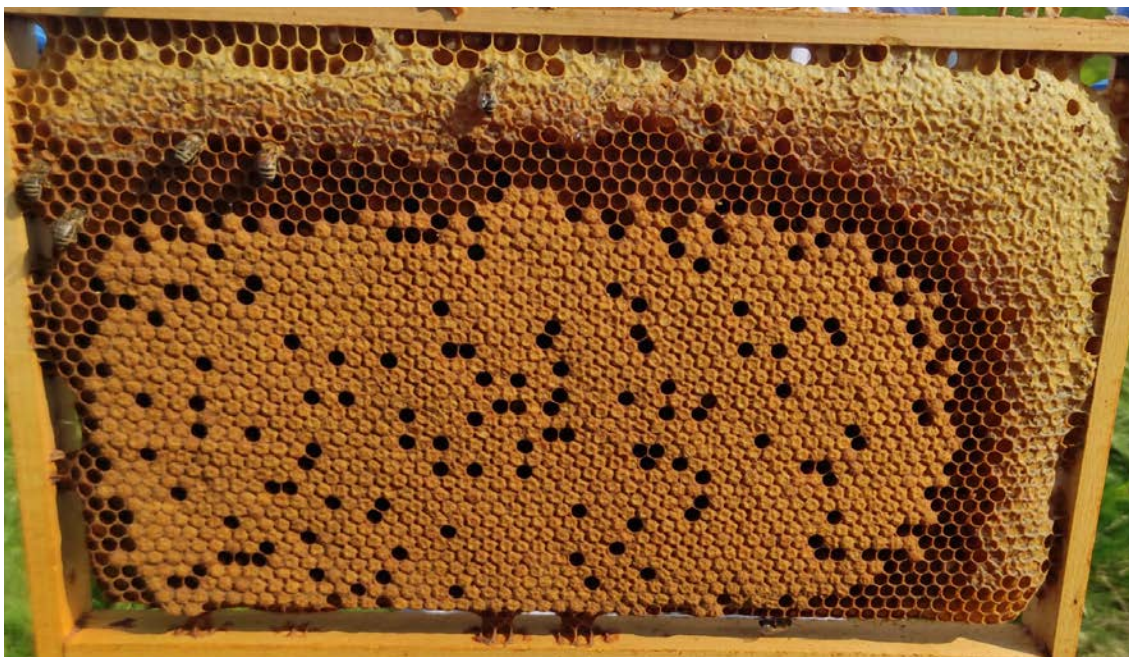


*Figure 4: A sample stained with methylene blue solution and carbolic Fuchsin solution, in which pink spores can be seen (Bollwein Markus)*



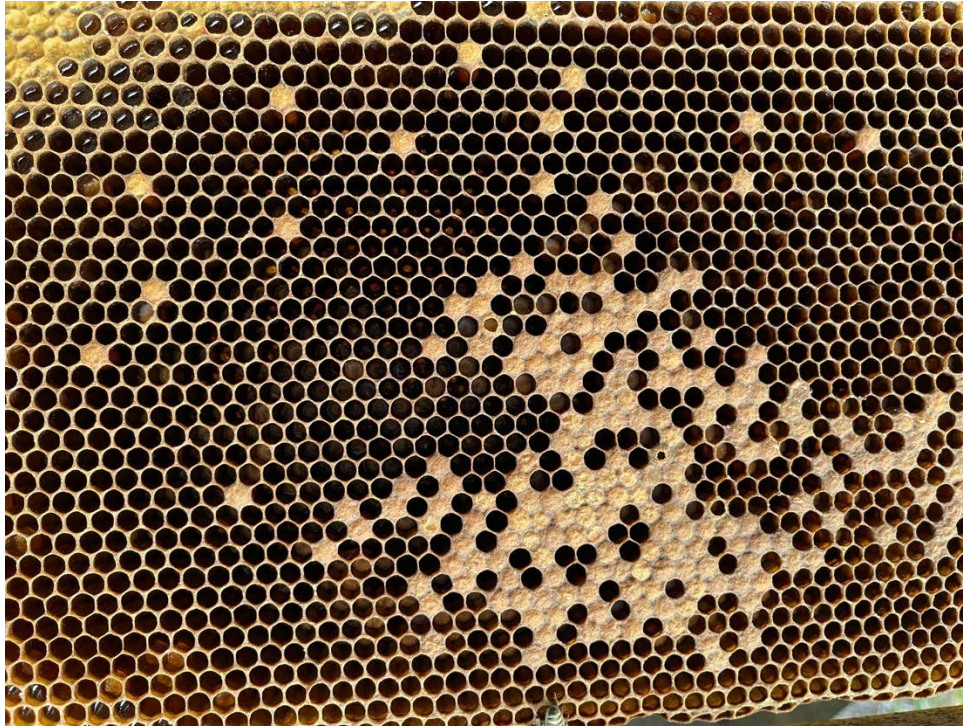


*Figure 5: A low infected brood comb before treatment with SP50 (Schalli Jasmin)*

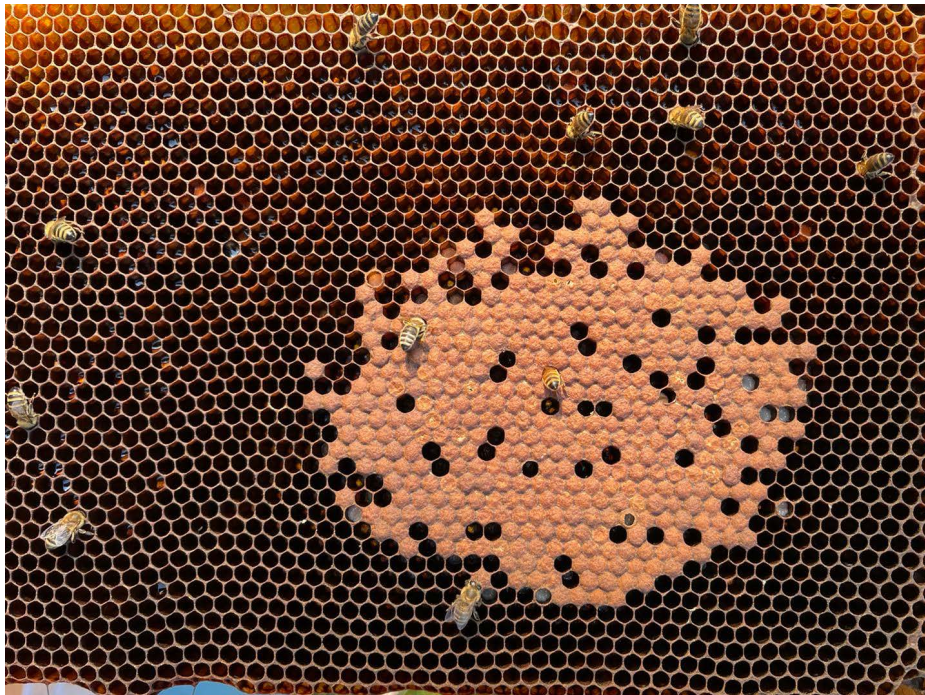


*Figure 6: Same low infected brood comb as Figure 5, after treatment with SP50 (Schalli Jasmin)*





*Figure 7: A strongly infected brood comb before treatment with SP50 (Schalli Jasmin)*



*Figure 8: Same strongly infected brood comb after treatment with SP50 (Schalli Jasmin)*

Table 1: Dosing of SP50

Application of SP50 in the various dimensions (Data in litres of ready-to-use solution)					
Hive box	First brood chamber	Second brood chamber	First honey chamber	Second honey chamber	Third honey chamber
Standard size	1	2	2,5	3	-
Zander	1	2	2,5	3	-
Zander flat	1	1,5	2,25	2,5	3
Dadant US / Blatt 10 Combs occupied With flat frames as honey chamber	2	-	2,25	2,5	3
Langstroth With flat frames as honey chamber	1,25	2,25	2,5	3	-
Apidea	50 ml of the ready solution	-	-	-	-