

# Light Guardian

Students :

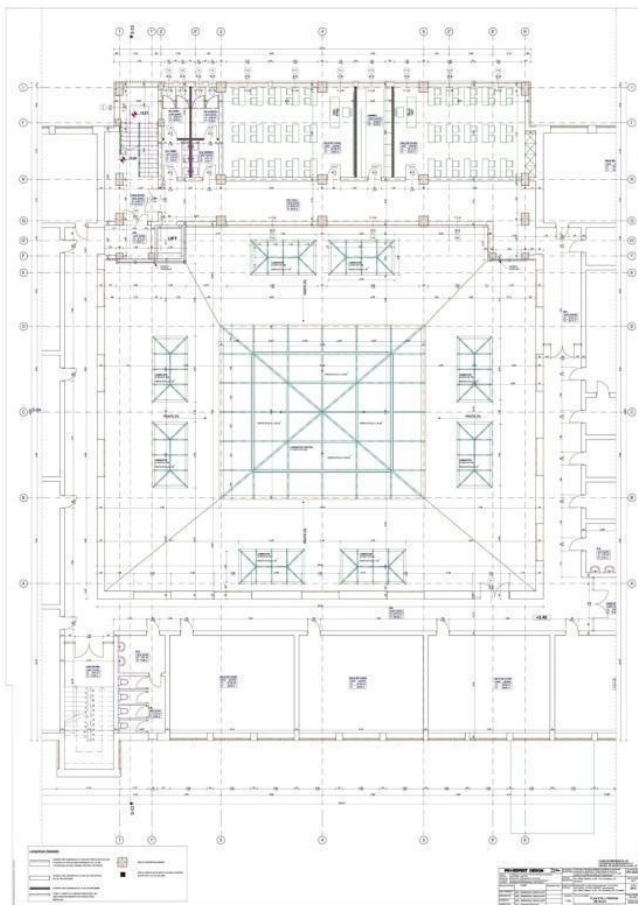
Nicoară Răzvan  
Vascovici Sabin – Vasile  
Mihuță Raul - Gabriel

Name of coordinator: Prof. Anca Viorica GRECULEAC

Represented institution: PETRU RAREȘ National College Suceava

## Illustrations and photos

### 1.1 The architectural plans of the building



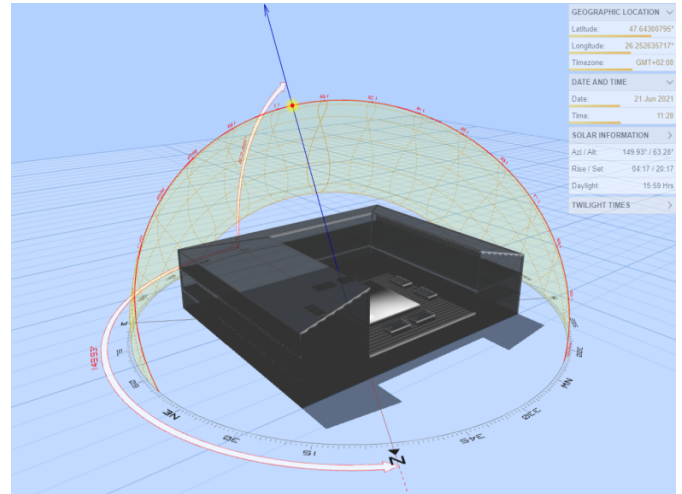
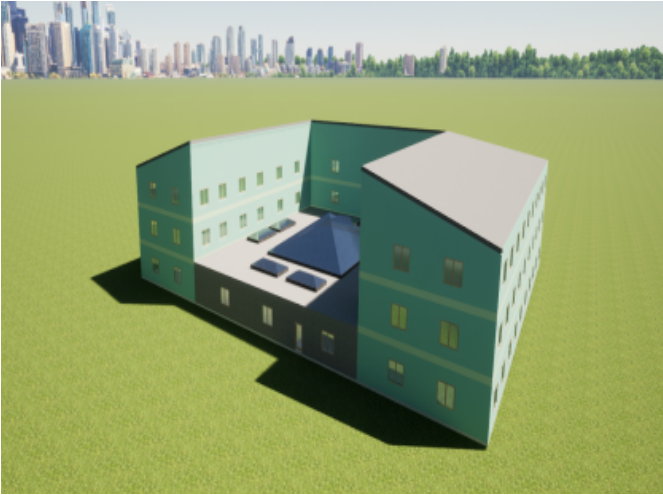
## 1.2. The pyramidal glass skylight located on the roof of the amphitheater-type festive hall



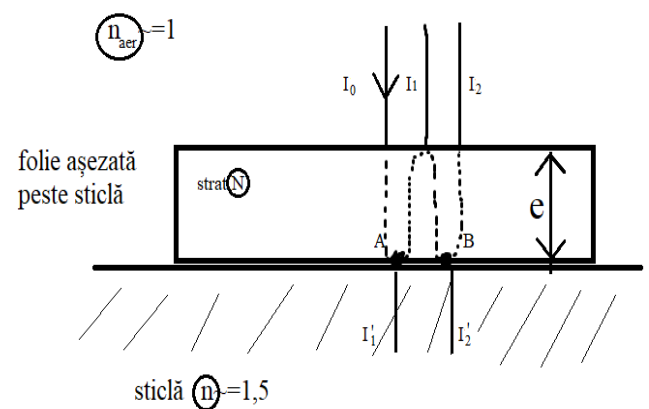
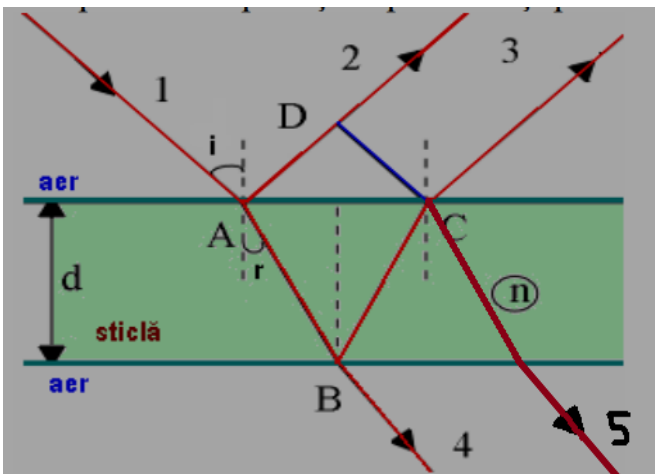
## 1.3. Performing field measurements



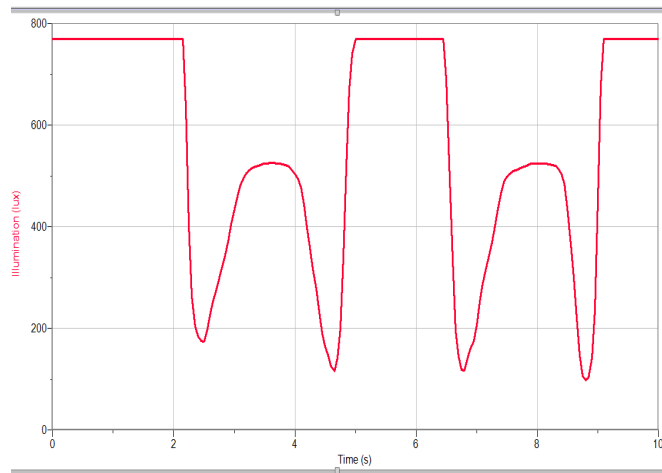
## 1.4. The virtual space model and the simulation of the sun's movement in relation to the model



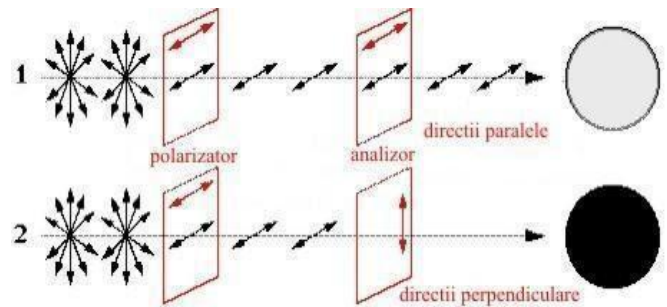
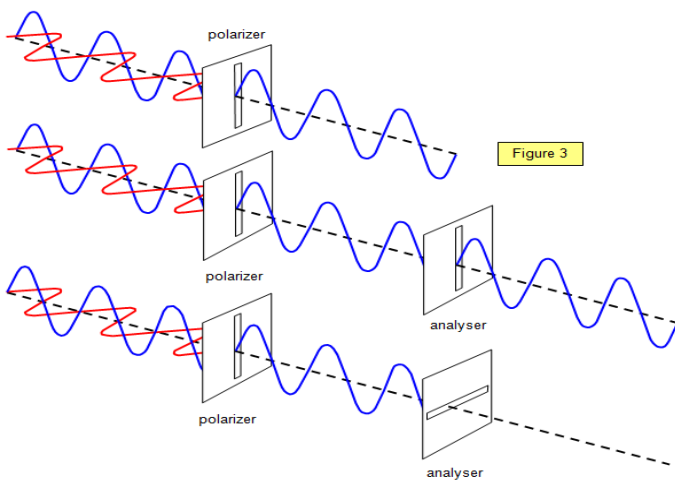
## 2. Layer which favors the reflection of light to the detriment of its transmission



## 2.1. Graph showing the efficiency of such a layer



## 3.1 Polarizer + analyzer system



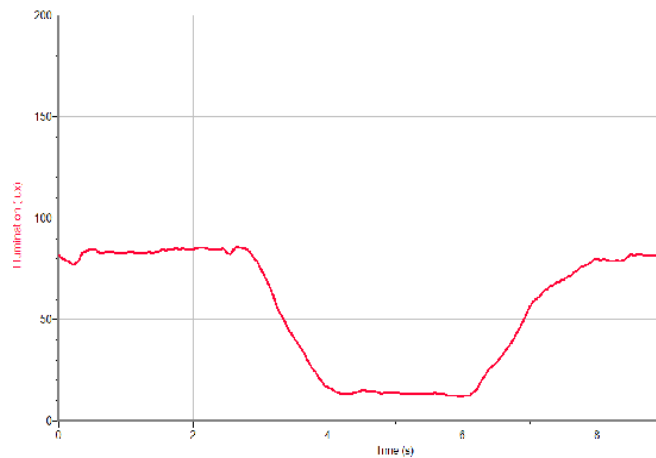
Source:

[http://www.schoolphysics.org/age16-19/Wave%20properties/polarisation/text/Polarisation\\_/index.htm](http://www.schoolphysics.org/age16-19/Wave%20properties/polarisation/text/Polarisation_/index.htm)

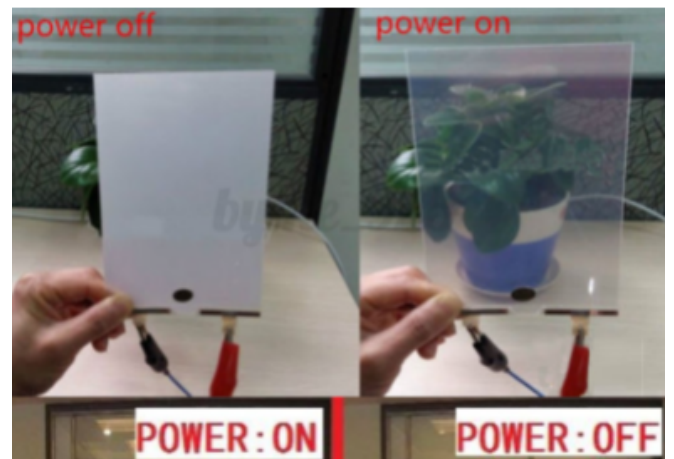
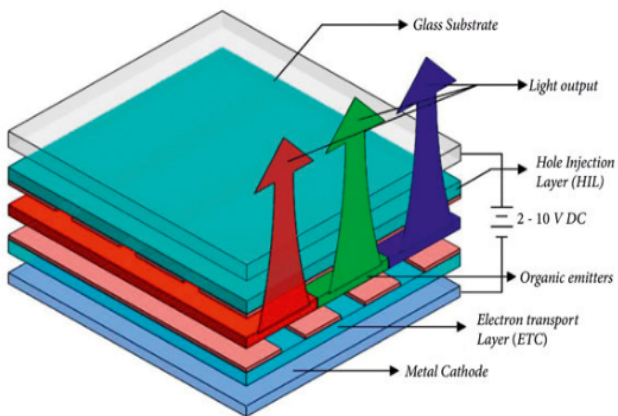
1



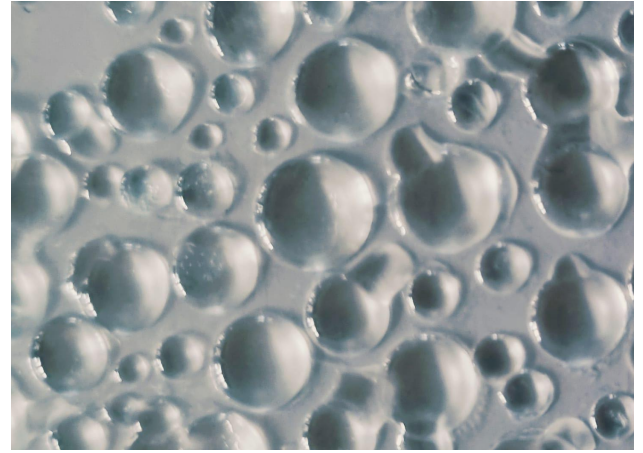
### 3.2. Graph showing the efficiency of the system



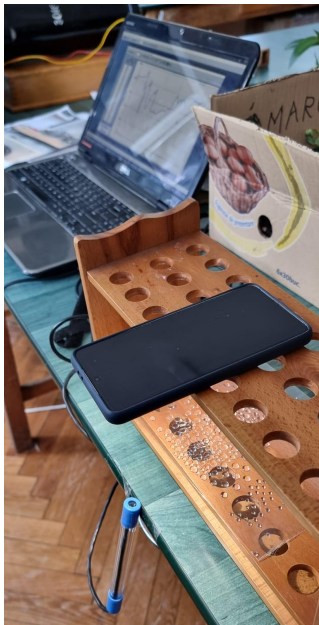
### 4. Electrically switchable layer



## 5.1 Dispersive layer prototype and early variants



## 5.2 Collecting data using illumination sensors and with/without LGF layer with variable light intensity



### 5.3 Graph showing the reduction of light intensity

